

Quickly and Easily:

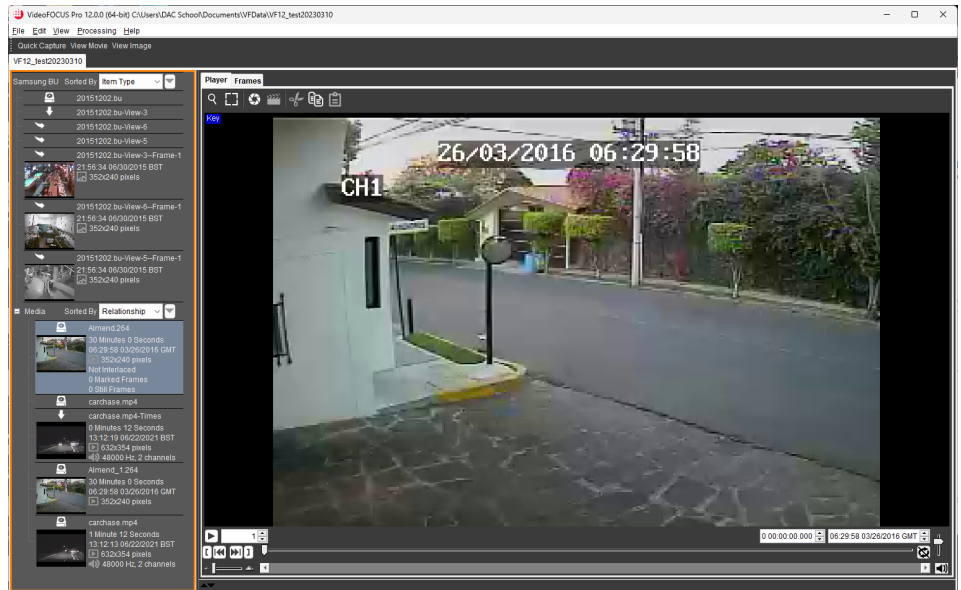
- **Capture video and audio from any application playing on the same screen, at up to 4K video resolution**
- **Produce Clips directly from H.264 or H.265 video sources without the delay or potential quality impact of transcoding**
- **Import any of over 200 standard multimedia and dozens of proprietary DVR file formats (including 4K), with hashes calculated**
- **Export video, audio, and/or images to standard file formats**
- **Annotate items of interest in the video with circles, squares, and labels that can move with the items, and add visible timestamp if desired**
- **Redact media for courtroom presentation**
- **Report all file hashes and steps needed to reproduce your work with a PDF document automatically produced with each export**
- **Demultiplex interleaved and switched camera views into separate videos**
- **Synchronize multiple audio and video recordings to play, review, and process as a group**
- **Clarify video and images with easy-to-use tools**
- **Clarify audio with the included CARDINAL MiniLab Suite and QuickEnhance tools**
- **Extract higher resolution still images from video with Super-Resolution**

For more information, or to request a price quotation, send us an email at sales@salientciences.com



VideoFOCUS Pro

Comprehensive Video and Audio Forensics



Organize your video, audio, and stills as folders in VideoFOCUS 12

VideoFOCUS is a family of digital multimedia analysis and clarification tools providing an efficient, seamless workflow for both novice and experienced forensic video analysts and audio experts.

Our flagship product, **VideoFOCUS Pro**, offers direct import from numerous standard and proprietary DVR file formats; screen capture from obfuscated formats requiring manufacturer's player; synchronization of multiple videos to a common time base for playing and processing as a group; visual annotation of items of interest with circles, squares, and labels that can move with the items; visual time and date stamping; frame and still image extraction capabilities; and a comprehensive yet easy-to-use set of processing tools to improve the clarity of both the video and the audio. Intuitive editing and redaction functions allow the user to quickly assemble end-product movie and/or audio files for dissemination and presentation in court. Finally, VFPro exports to standard multimedia file formats and automatically generates a report (PDF, DOC, or HTML format) detailing all file hashes, the exact steps needed to reproduce, and any notes that have been entered by the user.

www.salientciences.com

Digital Audio Corporation d/b/a Salient Sciences
5000 Centregreen Way Suite 500 Cary, NC 27513
Phone: +1 (919) 572-6767 Fax: +1 (919) 572-6786
E-mail: sales@salientciences.com

VideoFOCUS Pro provides a comprehensive, easy-to-use toolkit for video, image, and audio clarification.

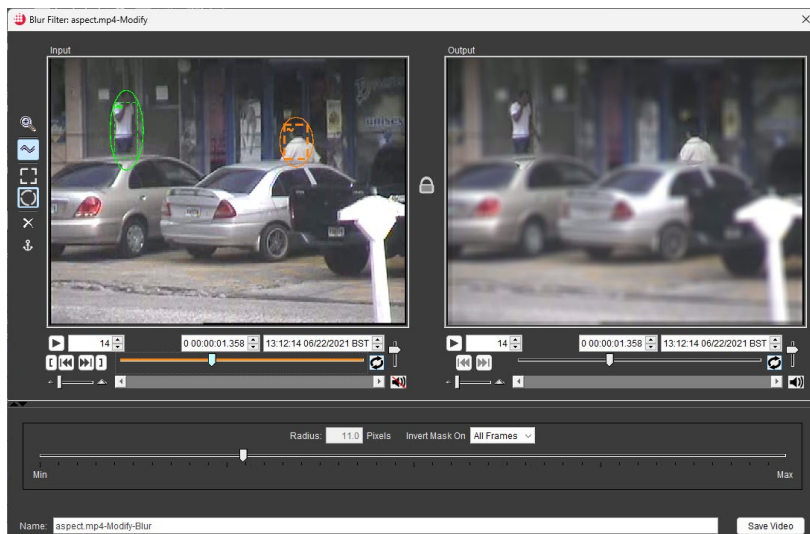
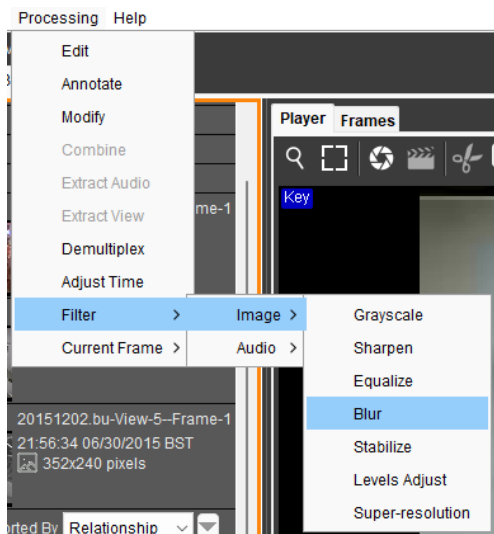
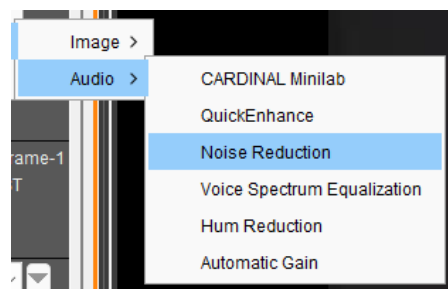
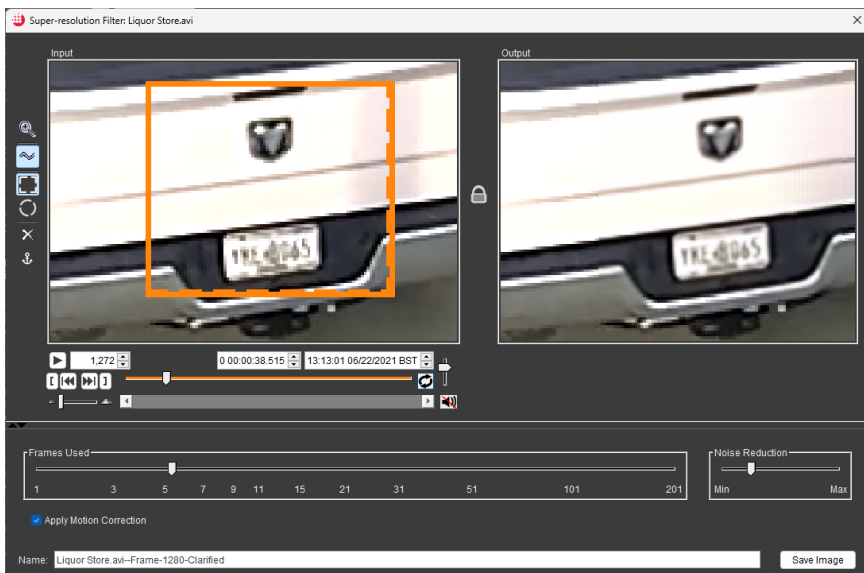


Image Filter menu provides powerful tools for improving the clarity and viewability of the images and video.

All Filter windows allow comparing before and after in perfect sync to see and hear the effect as parameters are adjusted (Blur filter shown as a typical example). Additionally, all filters can be applied either to selected spatial and/or temporal regions or entire session, with accurate tracking of selected objects.



Audio Filter menu provides multiple tools for clarifying the audio track(s) and maximizing the ability to hear and understand voices.

Our Super-resolution filter combines the pixel information across several successive video frames to extract a higher-resolution still image. Unlike simple frame averaging, this algorithm compensates for minor movement between images to minimize blurring while improving the overall definition.

VideoFOCUS Pro provides a comprehensive audio processing capability, unmatched by other video forensics tools.

The screenshot displays the VideoFOCUS Pro 12.0.0 interface. The main window shows a video frame with an audio waveform overlaid. A 'Filter Chain Filter: Nice Robbery' window is open, showing 'Input' and 'Output' video frames with corresponding audio waveforms. Below this, a 'Filter Chain Filter: Nice Robbery, Slot 3 - Spectral Inverse Filter' window is active, featuring the 'CARDINAL MINILAB SPECTRAL INVERSE' logo and 'Salient Sciences' branding. This window includes controls for 'Filter Operation' (Equalize Voice, Attack Noise), 'Output Shape' (Flat, Pink, Voice), 'Adaptive Mode' (Adaptive, Manual), and various frequency and gain sliders. A spectral plot at the bottom shows frequency response from 0Hz to 7350Hz. The main interface also shows a media list on the left and a playback timeline at the bottom.

Both the QuickEnhance Plug-In and CARDINAL MiniLab Suite are fully integrated, providing comprehensive noise reduction and voice clarification capabilities for the audio channel with perfect synchronization of the audio and video maintained at all times!

The screenshot shows the QuickEnhance Speech Clarification Processor interface. It features a 'SPECTRUM' window with a frequency plot from 7 to 6172Hz. The interface is divided into several functional sections: 'INPUT' with 'Auto-Normalize' and '200 Hz HPF' options; 'HUM FILTER' with 'Auto-Tracking' and 'Frequency' (60.0) controls; 'ADAPTIVE NOISE REDUCTION' with 'PREDICTABLE' and 'RANDOM' modes and 'Reverb' control; '20-BAND GRAPHIC EQUALIZER' with a frequency range from 80 to 6.0 kHz; and 'AGC' (Automatic Gain Control) with a 'Max Gain' of 10. The 'Salient Sciences' logo is visible at the bottom.

Salient Sciences

VideoFOCUS Pro

Technical Specifications (Version 12.0)

Supported Import Formats

- More than 200 standard AV file formats (AVI, MOV, WMV, ASF, MP4, 3GP, WAV, MP3, etc.)
- More than 50 popular DVR file formats (BU, DAT, DAV, DVR, DRV, IRF, LVF, PAR, SEC, 264, etc.)
- Screen and sound capture from any application
- Hash (MD5, SHA1, and SHA2) automatically calculated for each imported or captured source file

Supported Export File Formats

- Still images can be exported as JPG, TIF, or BMP
- Movies and audio exportable as AVI, MOV, MP4, WMV, MP3, or WAV
- Can choose either H.264, H.265, MJPEG, or uncompressed encoding for video

Processing Functions

High-Performance, Interactive Workflow

- Handles HD and UHD video formats smoothly and efficiently at full-size, with no requirement for the user to pre-crop or downscale
- Real-time preview for all audio and video processing functions

Combine

- Assembles multiple imported video and audio tracks into a synchronized multi-video session, using timecodes (if available) to define the relative timings
- Where timecode not available or inaccurate, can set any frame in each view to a precise time and date

Modify

- Crop, aspect correct, and rotate
- Change speed by percentage, force specific frame rate, de-interlace, and field swap
- Adjust audio channel selection, mix, and video timing

Demultiplex

- Automatically sorts an unlimited number of cameras and scenes into individual videos, based on pixel similarities

Filter

- Stabilize, Super-Resolution, Sharpen, Blur, Histogram Equalize, Levels Adjust, Grayscale for video and images
- Hum reduction, noise reduction, EQ, and automatic gain for audio channel(s)
- Redact function for audio, replaces with tone or silence
- QuickEnhance Plug-In, simplified speech clarification tool (see separate datasheet for details)
- CARDINAL MiniLab Suite, comprehensive speech clarification tool (see separate datasheet for details)

Annotate

- Visual annotation of items of interest with circles, squares, and labels that can move with the items
- Visual time and date stamping

Report

- Automatically details all steps needed to reproduce
- Notes fields allow user to add custom verbiage both for the overall case and for individual items
- Includes hashes for all export and source files
- Can choose PDF, DOC, or HTML file format

Supported Operating System

- Windows 10 or 11, 64-bit only

Machine Specification for Desktop Workstation *

- Processor: Intel Core i7, i9, or Xeon, 6 or more cores, 3.2GHz or higher speed
- Memory: 32GB or more
- Disk: 512GB SATA SSD for OS and programs, plus 2nd 1TB or larger M.2 or PCIe SSD for VideoFOCUS cases / projects
- Display: 32" or larger UHD (3840x2160) widescreen monitor
- Ports: Multiple USB 3.0 / 3.1, multi-format media card reader
- Optical Drive (optional): Internal Blue-Ray, DVD+/-RW combo drive for software installation and media import / export

Machine Specification for Mobile Workstation *

- Processor: Intel i7, i9, or Xeon, 4 or more cores, 2.8 GHz or higher speed
- Memory: 32GB or greater
- Disk: 1TB or larger M.2 NVME SSD (OS, programs, and VideoFOCUS cases / projects on same disk)
- Display: 15" FHD (1920x1080) widescreen
- Ports: Multiple USB 3.0 / 3.1, multi-format media card reader
- Optical Drive (optional): Internal or USB external combo drive for software installation and media import / export

* Contact support@salientosciences.com for additional recommendations on graphics cards to further accelerate performance!

Licensing Options

Perpetual (Online or USB Dongle)

- Software functions indefinitely at last version maintained
- Purchase maintenance to continue entitlement to newest versions (first year included)
- Choose USB Dongle if you need to move license between multiple machines or operate without an internet connection

Subscription (Online or USB Dongle)

- Software functions for one year, with full entitlement to newest versions, then ceases operating unless renewed
- Purchase maintenance to renew subscription and continue entitlement to newest versions
- Choose USB Dongle if you need to move license between multiple machines or operate without an internet connection